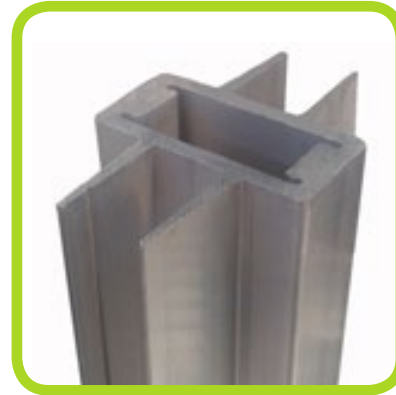


The San Benigno Parapet – 60x30mm upright

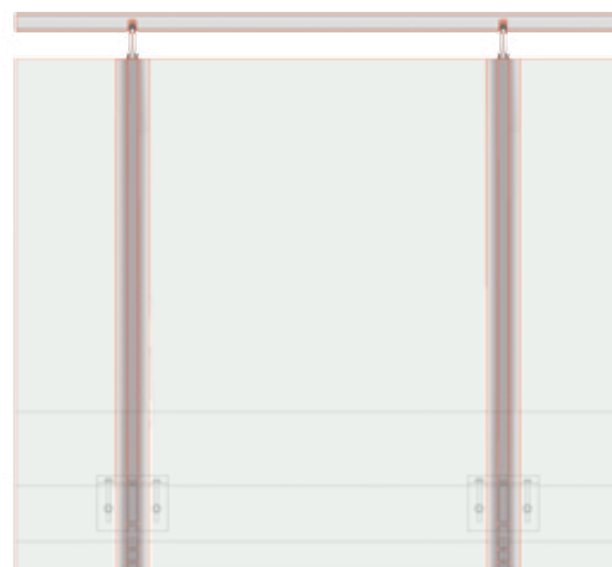
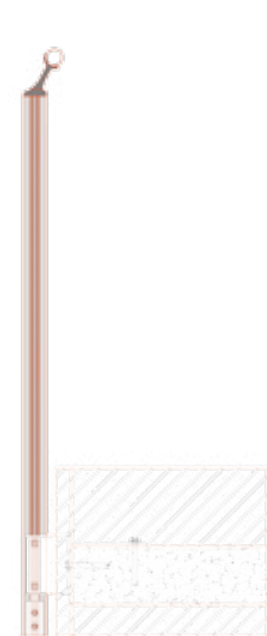
The San Benigno solution is a kit composed of: 1) L-shaped EN AW 6060 T6 extruded aluminium alloy mounting brackets (100x50, thickness: 10mm) and 60x30 EN AW 6082 T6 extruded aluminium alloy uprights with a 20mm single and double slot to hold the sheet of glass; 2) a round Aluscalae handrail which is 45mm in diameter, joined to the uprights by supports obtained from fusion; 3) screws and anchoring plugs which are made of stainless steel if exposed and galvanized steel if encased in cement flooring.



load capacity	interaxial distance
1KN/m	150 cm
1,5KN/m	125 cm
2 KN/m	100 cm

Kit contents

- 60x30 anodized upright
- 100 x 50 x 10 mm mounting brackets with slotted holes
- Aluscalae handrail (diameter: 45mm) with support
- Tempered laminated glass
- Aluminium terminals and corner joints
- Stainless steel, class A2 nuts and bolts for assembly
- Stainless steel M12x110 or cl. 8.8 mounting plugs



AW6060 T5 C7055 handrail
Varnished aluminium handrail support

90x30 AW6082 T6 upright

Tempered laminated glass (cut to size)

M10 countersunk head screws (x2)

M12x 100/120mm
mounting plugs (x2)

Aluminium glazing
bead profiles (x2)

